

cleanness and health



why ecospray It's well known that painting with conventional systems creates a lot of pollution due to the overspray, that - in addition to paint waists and pollution - can cause serious problems to health. Ecospray is designed to avoid all these problems.

how it works The ambient air goes directly through the air inlet of the turbines, feeding the spray gun with dry and hot air at low pressure. The paint is not mixed with air and goes directly on the spray pattern - also on the corners - without bouncing back from the surface.

advantages **Pollution it is like painting with the brush.:** Painting with ecospray system you avoid almost completely the overspray. It is a fact that with ecospray system you have no paint floating in the air for about 15-20 minutes minimum, not creating a very bad condition for the breath of the operators.

A clean and neat workplace, without dust and pollution caused by traditional systems; operators can work with a minimum protection equipment.

Time reduction of masking and protecting the parts which you don't want to spray on. Spraying in a workshop you don't need to cover any other object around your workplace because you have not paint depositing around.

Time saving: the spray pattern is preheated in the nozzle and begins to dry first from underneath. Working on a vertical surface you avoid leaking of the paint applying the second hand after 60 seconds on the first one.

Paint saving up to 50%, due to transfer efficiency from 65% 90%. Solvents need is also reduced.

Antistatic: The paint sprayed with our system does not attract dust, flies and mosquitoes.

No compressed air needed. Ecospray system needs only 220v electric power.


i information note

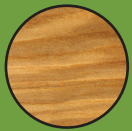
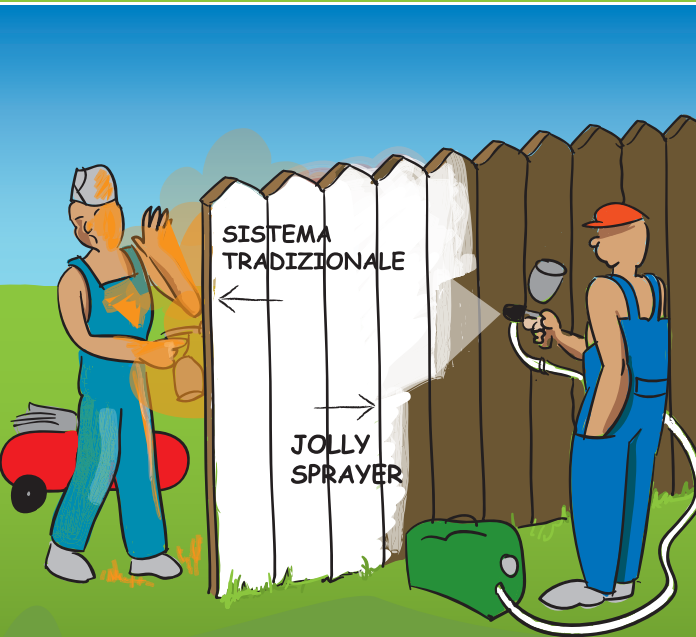
It's understood that - even if Eco Spray system significantly reduces spray paint pollutions - you must follow every advice provided by paint producer and wear every protection gear needed with the painting product. Users must follow every law about safety and regarding a good aeration, fire safety and every law about workplace keeping.

ecospray
clean efficiency

jolly
sprayer

paints, where needed.

made in Italy 



Timber

painting, retouching and finishing of furniture, windows and fences.



Iron and metals

spraying antirust, painting and retouching jobs.



Boating

antifouling, maintenance and painting jobs.



Walls

antimold, painting and finishing jobs.



Vehicles

painting and maintenance of working vehicles.

Light and compact, Jolly Sprayer gives all the advantages of ecospray range of units, at a reasonable price. No compressed air is needed neither three phase power. Jolly Sprayer is perfect for maintenance jobs, paint retouch, in the workshop and in open place, without any overspray and dust floating. Suitable for painting iron, timber constructions, furniture, boats, industrial body shop

Maximum viscosity	20° coppa Ford 4
Air hose	3m
Transfer efficiency	>70%
Fan width	20cm
Speed of performing m ² per minute	1,2
Motor power	1000w
Ampères	6A
Power supply	220v/50Hz
Turbine speed	max 16.000 rpm
Air delivery	250 m ³ /h
Noise level	81db (A)
Working temperature	0° - 45°C
Weight	4,5 kg
Size	38x27x24cm

Technical data are based on tests made in laboratory with metallic paint with a thickness of 120 microns of fresh paint using a standard nozzle 1.2 mm with a viscosity 30° Ford cup 4.

turbine **Tornado Sprayer**

Tornado sprayer is normally used with the upper tank spray gun (see schedule).



If combined to a low pressure pump or an under pressure tank, it works with an under pressure gun fed by the pump.



about Tornado Sprayer is a multi purpose and very handy spray unit. Tornado Sprayer belongs to the ecospray line, whit all features and performances of it. No compressed air is needed neither three phase power.

purposes Tornado Sprayer is very suitable for jobs inside the workshop without creating any overspray and consequently paint saving and keeps the work ambient clean. Tornado Sprayer is also suitable for paint retouch, maintenance jobs in open place and in canter, building sites, boat canters, aircraft construction, excavators, cranes, train industry, etc. Suitable for all kinds of paints, enamels, anti rust, mono pack and two pack paints.

working data		
Maximum viscosity		30-40° Ford cup 4
Air hose		7m
Transfer efficiency		>75%
Fan width		25cm
Speed of performing m ² per minute		2

technical data		
Motor power		1450w
Ampères		6A
Power supply		220v/50Hz
Turbine speed		max 26.000 rpm
Air delivery		250 m ³ /h
Noise level		84db (A)
Working temperature		0° - 45°C
Weight		9,5 kg
Size		30x28x26cm

Technical data are based on tests made in laboratory with metallic paint with a thickness of 120 microns of fresh paint using a standard nozzle 1.2 mm with a viscosity 30° Ford cup 4.

turbine Silent Magnum

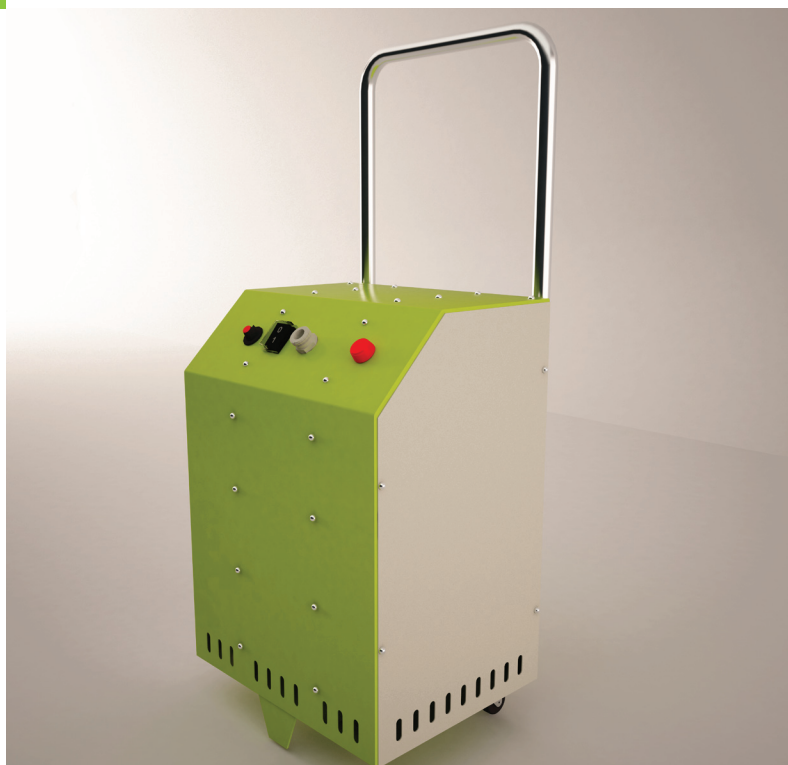
Silent Magnum is normally used with the upper tank spray gun (see schedule).



If combined to a low pressure pump or an under pressure tank, it works with an under pressure gun fed by the pump.



The power adjuster allows the operator to set the speed of the turbine directly from the gun handle.



about Silent Magnum is suitable for the workshop and the canter, and it gives high performances. Practical and handy it doesn't need any compressed air and three phase power. It needs also very little maintenance. It is very silent and can work 24 hours a day, without disturb anybody around the working place.

purposes Suitable for industrial sites and artisan workshop, carpenter sites, internal jobs in close ambiances. Spraying any kind of paints, enamels and gel coats.

working data

Maximum viscosity	45" coppa Ford 4
Air hose	10m
Transfer efficiency	>75%
Fan width	35cm
Speed of performing m ² per minute	2.6

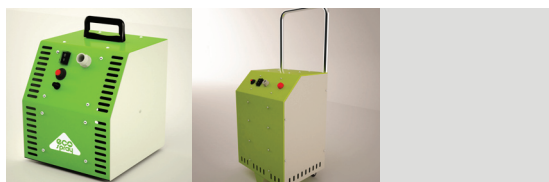
technical data

Motor power	2000w
Ampères	9A
Power supply	220v/50Hz
Turbine speed	max 26.000 rpm
Air delivery	250 m ³ /h
Noise level	4db (A)
Working temperature	0 - 45°C
Weight	9,5 kg
Size	30x28x26cm

Technical data are based on tests made in laboratory with metallic paint with a thickness of 120 microns of fresh paint using a standard nozzle 1.2 mm with a viscosity 30° Ford cup 4.

Electric pump

Combined with an Ecospray turbine, the electric pump feeds the pressurized spray gun.



advantages Combined with an ecospray turbine, gives the comfort of working with a light and handy pressurized spray gun. The electric pump can be equipped with a 6liters gravity tank or a suction feeder. With Tornado Sprayer, a single unit solution is also available. (see schedule).

working data

Maximum viscosity (with gravity tank)	50" Ford cup 4
Maximum viscosity (with suction feeder)	40" Ford cup4
Tank volume	6 litres
Supply	3L/min

technical data

Power	250w
Ampères	2
Power supply	220v/50Hz
Pressure max	20 bar
Weight (empty)	15 kg

Upper tank spray gun

advantages

Pressurized upper tank avoids paint loss and gives to the operator the chance of working with the gun in a inclined position, well closed by our unique autoclave system.

With floating air adjuster you can do every kind of surface from plain to rough.

cleannes and precision

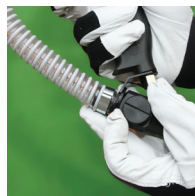
The fan is complete, neat and full and gives a good spray pattern. You can pass from a thin, precise round jet to a very wide fan (20 or 30 cm, depending from the size of the nozzle and the speed of the turbine).

application

The upper tank spray gun is suggested for every job that doesn't require a high amount of paint.



Pressurized upper tank with an autoclave system permits to open and close the cover having one hand always free.



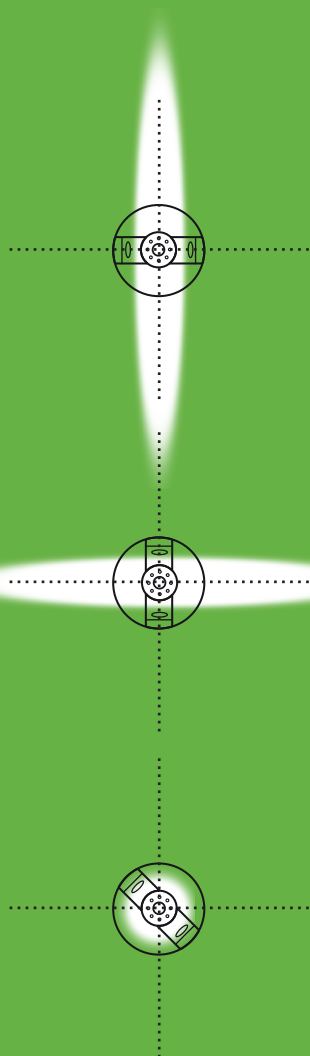
With floating air adjuster you can do every kind of surface from plain to rough, for example orange peel pattern to cover metal imperfections.



The adjustable ring allows to set the width of the fan. You can pass from a thin, precise round jet to a very wide fan.



The back knob, setting the needle stroke, allows you to adjust the paint amount.



It works with every turbine of Eco Spray system.

Pressurized spray gun

advantages

Low weight and low volume.

This light and handy spray gun - having no tank - can assume any position and work in any direction.

With floating air adjuster you can do every kind of surface from plain to rough.

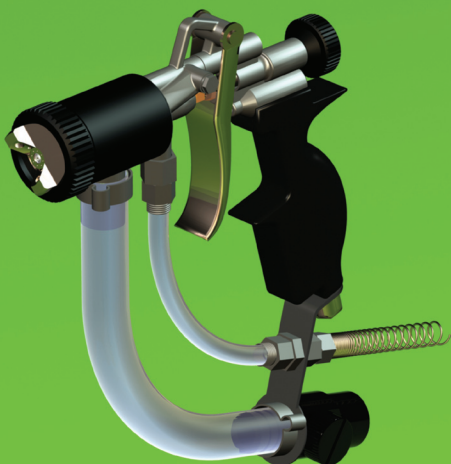
cleanness and precision

The fan is complete, neat and full and gives a good spray pattern.

You can pass from a thin, precise round jet to a very wide fan (20 or 30 cm, depending from the size of the nozzle and the speed of the turbine).

application

For yards and workshop where high performances are needed.



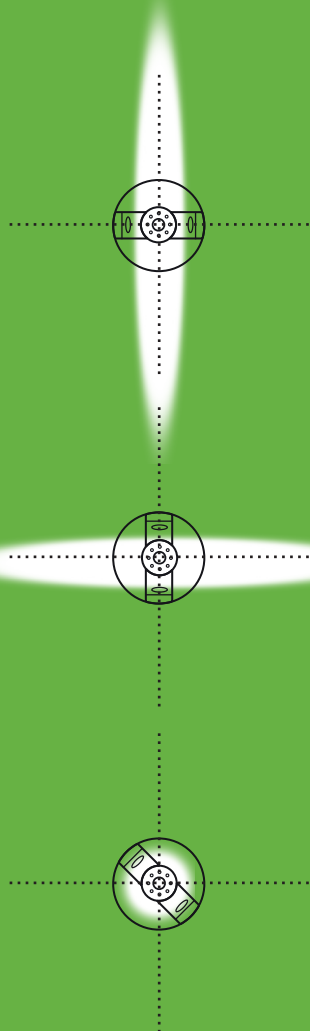
With floating air adjuster you can do every kind of surface from plain to rough, for example orange peel pattern to cover metal imperfections.



The adjustable ring allows to set the width of the fan. You can pass from a thin, precise round jet to a very wide fan.



The back knob, setting the needle stroke, allows you to adjust the paint amount.



+



It works with an Eco Spray turbine, combined with a low pressure pump.



comparison table



transfer efficiency (aproximate)	>70%	75%	80%
performance speed m ² /min	1.5	2	3
maximum viscosity (Ford cup 4)	20"	30"	45"
gun fan width	20cm	25cm	35cm
air hose	3m	7m	10m
speed adjuster on gun handle	no	no	sì
weight	4kg	9.5kg	
motor power	1000w	1450w	2000w
air delivery		250 m ³ /h	330 m ³ /h
power supply	220v	220v	220v

combo unit **tornado sprayer**
+ **electric pump**

works with the pressurized spray gun.



advantages Versatility and convenience of the Tornado Sprayer and electric pump in one unit, with the advantage of having a 6-liter hopper or a float and the comfort of a gun under pressure.

purposes Easy to handle, so perfect both in workshop or yards, requiring no compressed air.

working data

Maximum viscosity	30-40" coppa Ford 4
Air hose	7m
Transfer efficiency	>75%
Max fan width	25cm
Tank volume	6L
Speed of performing m ² per minute	2

technical data

Pump motor power	250w
Turbine motor power	1450w
Pump ampères	2
Turbine ampères	6
Power supply	220v/50Hz
Working pressure	2 - 5 bar
Weight (empty)	25 kg

Technical data are based on tests made in laboratory with metallic paint with a thickness of 120 microns of fresh paint using a standard nozzle 1.2 mm with a viscosity 30° Ford cup 4.